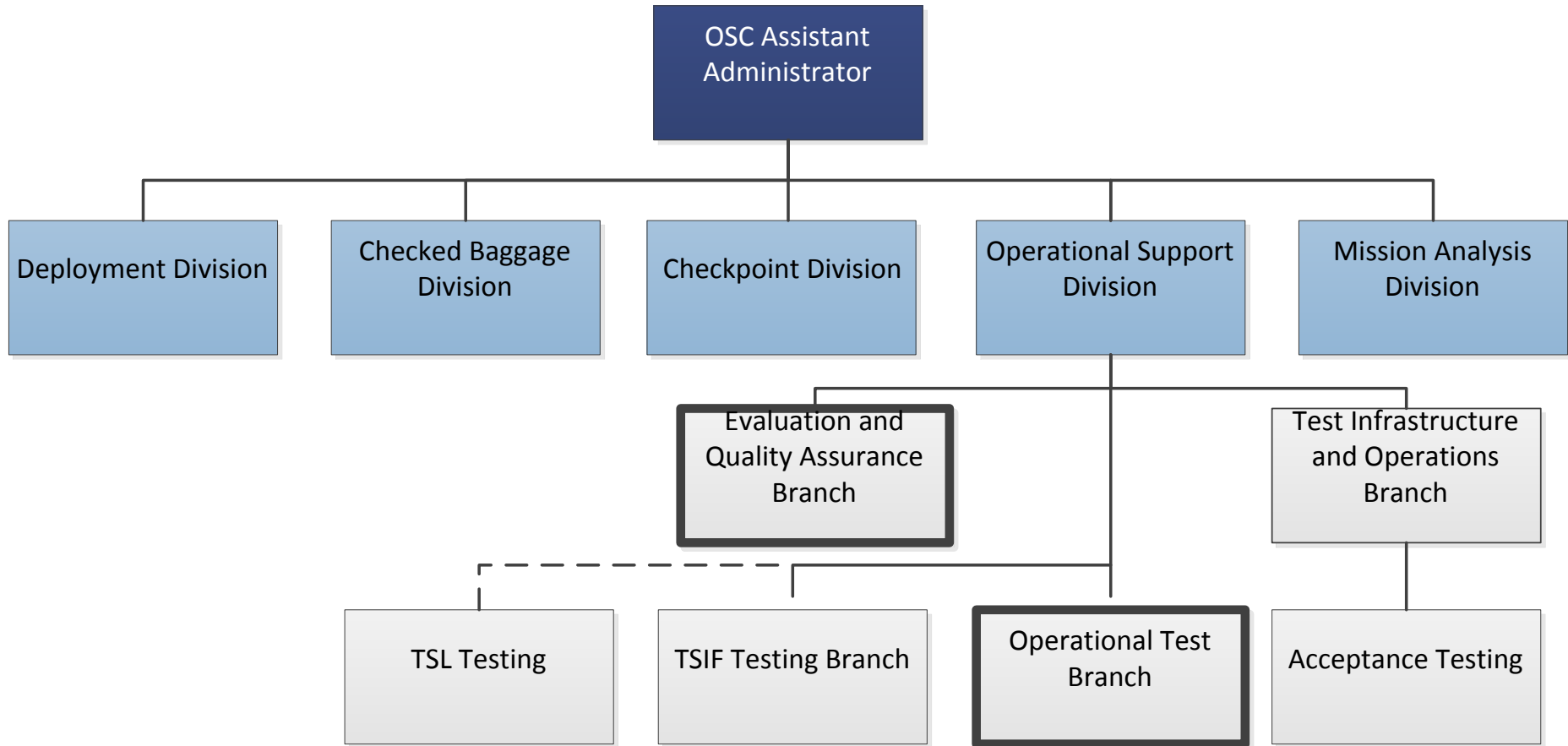


# Operational Support Organization



Denotes Operational Test Agency Element

# Test Organizations

## TSA Systems Integration Facility (TSIF)

### TSIF Test Branch

- The test program is primarily DT/QT oriented addressing conformance with technical requirements under controlled conditions in laboratory or a simulated operational environment
- TSIF lab space includes a:
  - Baggage Handling System
  - Passenger screening lab with multiple system layouts
  - Floor area with the capacity and infrastructure to test cargo and vehicle screening systems
  - Lab dedicated to ETD and BLS system testing



### T&E Infrastructure & Operations Branch (TI&O)

- Responsibilities include: creation of test articles, certifying testing processes, executing facility modifications, equipment logistics management, and supporting testing activities
- TI&O Subsections include:
  - Test Article Program
  - Acceptance Testing
  - PSP/Trace Laboratory
  - EBSP/Cargo Test Areas

# Test Organizations Cont'd

## Operational Testing

### Operational Test Branch (OT)\*

- Conducted to support an acquisition decision and assess a system's operational effectiveness and suitability using typical, trained personnel in a realistic operational environment.
- Occurs once a system has successfully met DT/QT exit criteria



### Acceptance Testing

- Performed on systems after production and installation to ensure consistency of the manufacturing process, system configuration, performance, and functionality assessed against specific criteria using system-specific test plans and procedures.

## Evaluation and Quality Assurance Branch (EQA)\*

- Performs independent system evaluations and provides them to the PMOs, DHS Director of Operational Test and Evaluation (DOT&E), and key acquisition decision makers
- Uses the results of both developmental and operational test events to do their system evaluations; works with PMO and the other test organizations to ensure that the DT and OT events appropriately support their evaluation.



\*OTS and EQA together serve as OSC's designated Operational Test Agent (OTA) – per DHS policy, operational testing and evaluation must be conducted by an independent OTA

# Current Initiatives

In addition to on-going testing at TSIF and OT sites, the Operational Support Division is working on several projects and initiatives.

Project/Initiative	Overview
<b>Enhancing QMP Process</b>	<ul style="list-style-type: none"> <li>• TSA is conducting stakeholder interviews to improve the overall QMP process.</li> <li>• The revised process will require OEMs to meet more stringent criteria before entering the formal T&amp;E process.</li> </ul>
<b>Third Party Testing</b>	<ul style="list-style-type: none"> <li>• Assist OEMs in developing more mature systems that can quickly progress through each phase of testing by providing objective and expert pre-testing support.</li> <li>• Improve TSA's ability to more efficiently test, acquire, and deploy, effective and suitable technologies.</li> </ul>
<b>T&amp;E Process Guide</b>	<ul style="list-style-type: none"> <li>• External document detailing all phases of the T&amp;E process, from initial planning and developmental testing, to evaluation criteria and acquisition.</li> <li>• Improves communication and information sharing between TSA and vendors and identifies roles and responsibilities for key stakeholders, throughout each phase and describes criteria that must be met to progress to system acquisition.</li> </ul>
<b>Permanent Test Bed Selection</b>	<ul style="list-style-type: none"> <li>• Site selection procedures are performed once for each vendor and EDS model.</li> <li>• Upon agreement with the airport, a primary test site is established.</li> <li>• This test site will be used for future operational testing efforts for that vendor and EDS model and will support multiple tests.</li> </ul>

————— Back Up Slides —————