



Test Policy & Organisation:

A UK Perspective



Ketan Patel

Deputy Head Evaluation, UK MOD





- **Evolving Landscape**
- **Strategic level Policy and Implications for T&E**
- **UK Approach to T&E**
- **The Need for Change & Conditions for Success**
- **The Role of Modelling and Simulation - Some Thoughts**





UK MOD Structure (Defence Operating Model)

Defence Secretary and Ministers

Direct

Defence Board

Head Office

Enable

Defence Business Services

Defence Infrastructure Organisation

Science and Technology

Ministry of Defence Police

Defence Safety Authority

Acquire

Defence Equipment and Support

Information Systems and Services*

Generate and Develop

Navy Command

Amy Command

Air Command

Joint Forces Command

Operate

Permanent Joint Headquarters*

Directorate Special Forces*

Industry

Systems and Services

Force Elements

Other Military Tasks

Operations

Trading Funds

Account

* Within Joint Forces Command



UK Approach to T&E

- **Demand Signal**
 - Responsibility rests with Front Line Commands to articulate their T&E requirements.
- **Supply Signal**
 - Responsibilities for undertaking T&E activities and responding to the results are spread widely .
 - The current delegated ‘laissez faire’ management approach has driven complexity.
 - The MOD has also combined a number of key T&E capabilities

“We must never send our soldiers, sailors and airmen into battle without the right equipment, the right training or the right support.” SDSR.10



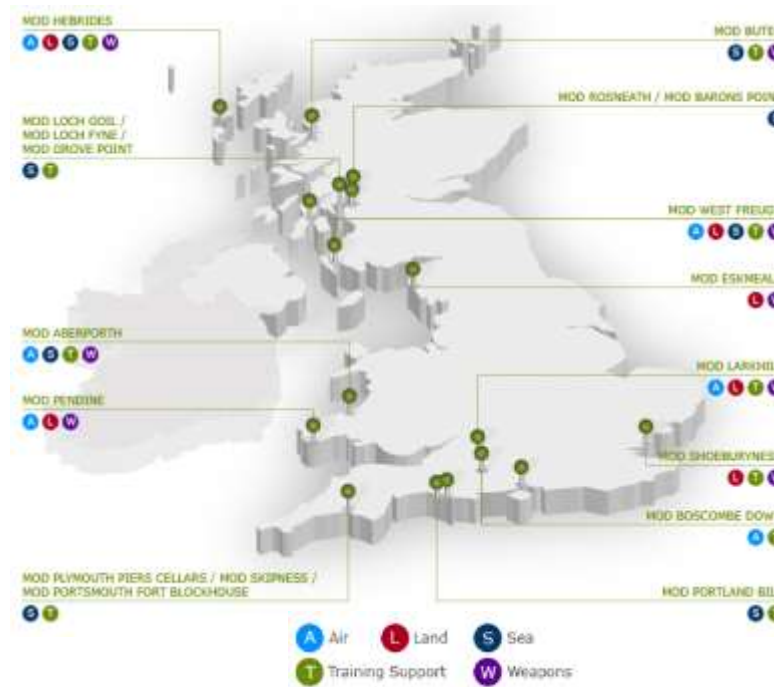
Comparison UK-US



- Tracking & systems
- Sonobuoy testing
- Evaluation of torpedoes & sonar
- Maritime signature measurement
- Electronic warfare calibration



- Missile & air flight weapon testing
- Deployable air trial instrumentation services
- Aerial & surface targetry
- Manned and heavy store parachute drops
- RPV flights & store drop testing
- Navigation/GPS testing



- Munitions, propellant & weapon systems
- Dynamic & static warheads
- Proof of munitions & armour
- Safety testing of hazardous stores
- Ordnance disposal
- Environmental testing of explosives and munitions



- Flight Test
- Aircraft Maintenance
- Modification and Installation
- Airworthiness Assurance
- Air fleet Facilities
- Ground Based Test Facilities
- ETPS

US

Major Range and Test Facility Base (MRTFB): The “Critical Core”

23 Sites: Army-8; Navy-6; Air Force-7; Defense Agency-2

- Army – 5.5M acres Land
- Navy – 1M acres Land, 165K sq mi Sea, 103K sq mi Air
- Air Force – Western Ranges ALONE 5M acres Land



T&E Change Programme

- Previous 8 studies failed to deliver!

why?

- Senior Level Study (2015): Recognised the requirement to:
 - Enhance MoD's governance and oversight of T&E
 - Re-invigorate our relationship with Strategic Suppliers of T&E
 - Better understand the cost of pan-Defence T&E
 - Establish our current and future T&E requirements
 - take efficiency savings from the current T&E enterprise by tackling issues which have mostly been exposed before, but not properly acted upon.

1. Review and Studies

2. External Assistance

3. Commercial

4. Financial

5. Processes and Improvements (Demand)

6. Policy and Strategy

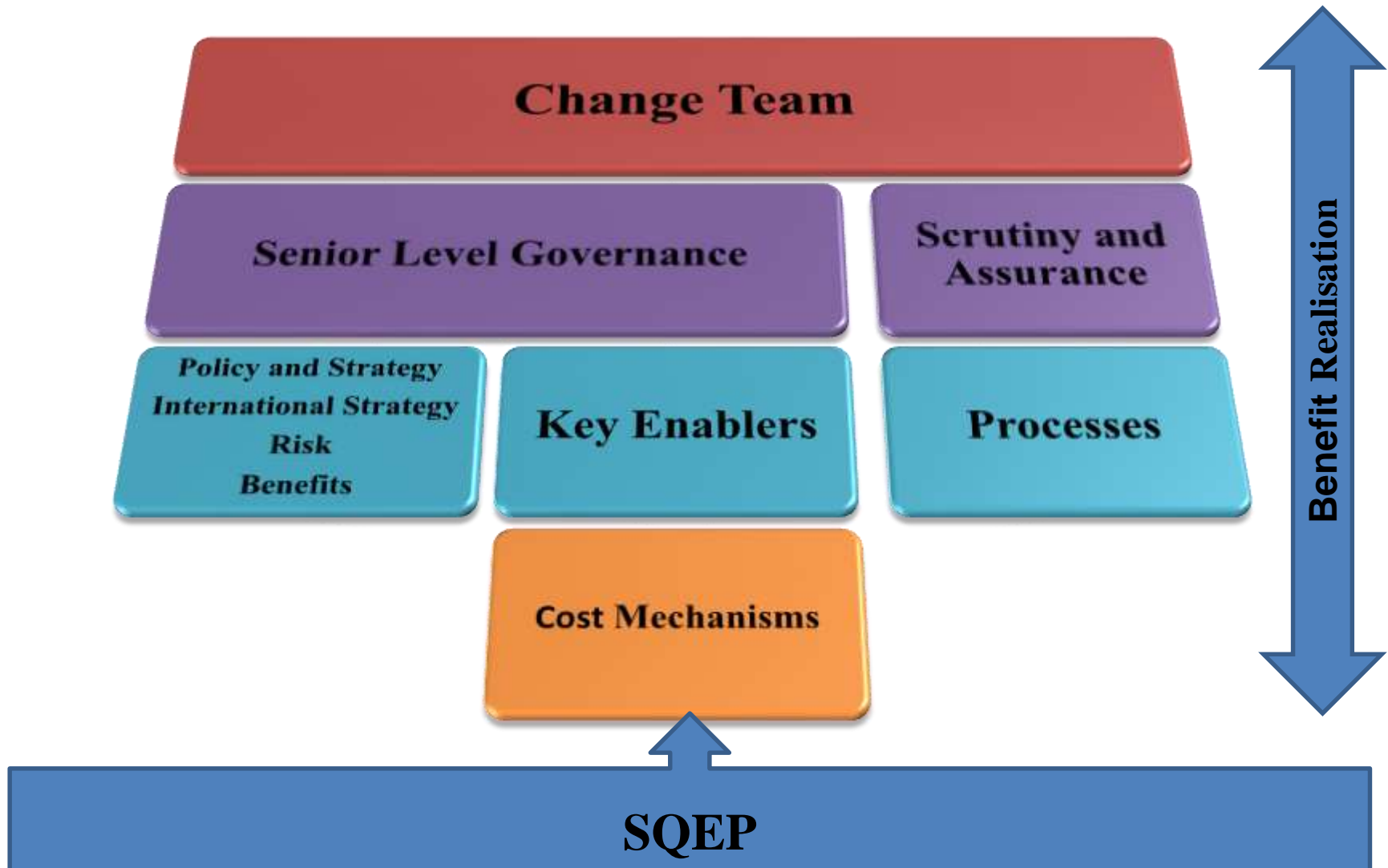
Understand & Diagnose As-is Defence T&E





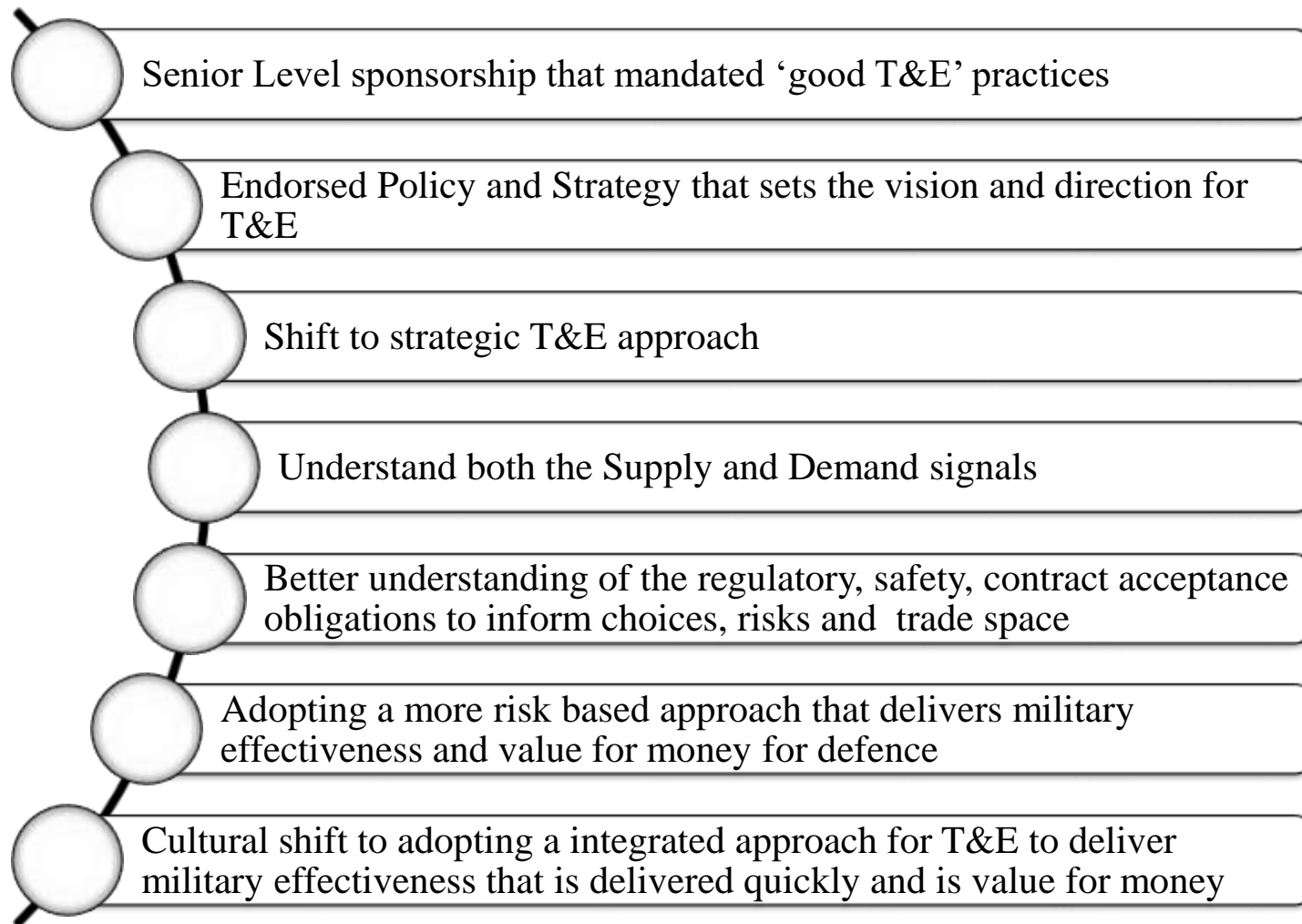
T&E Change Programme

- 8 Core Building Blocks





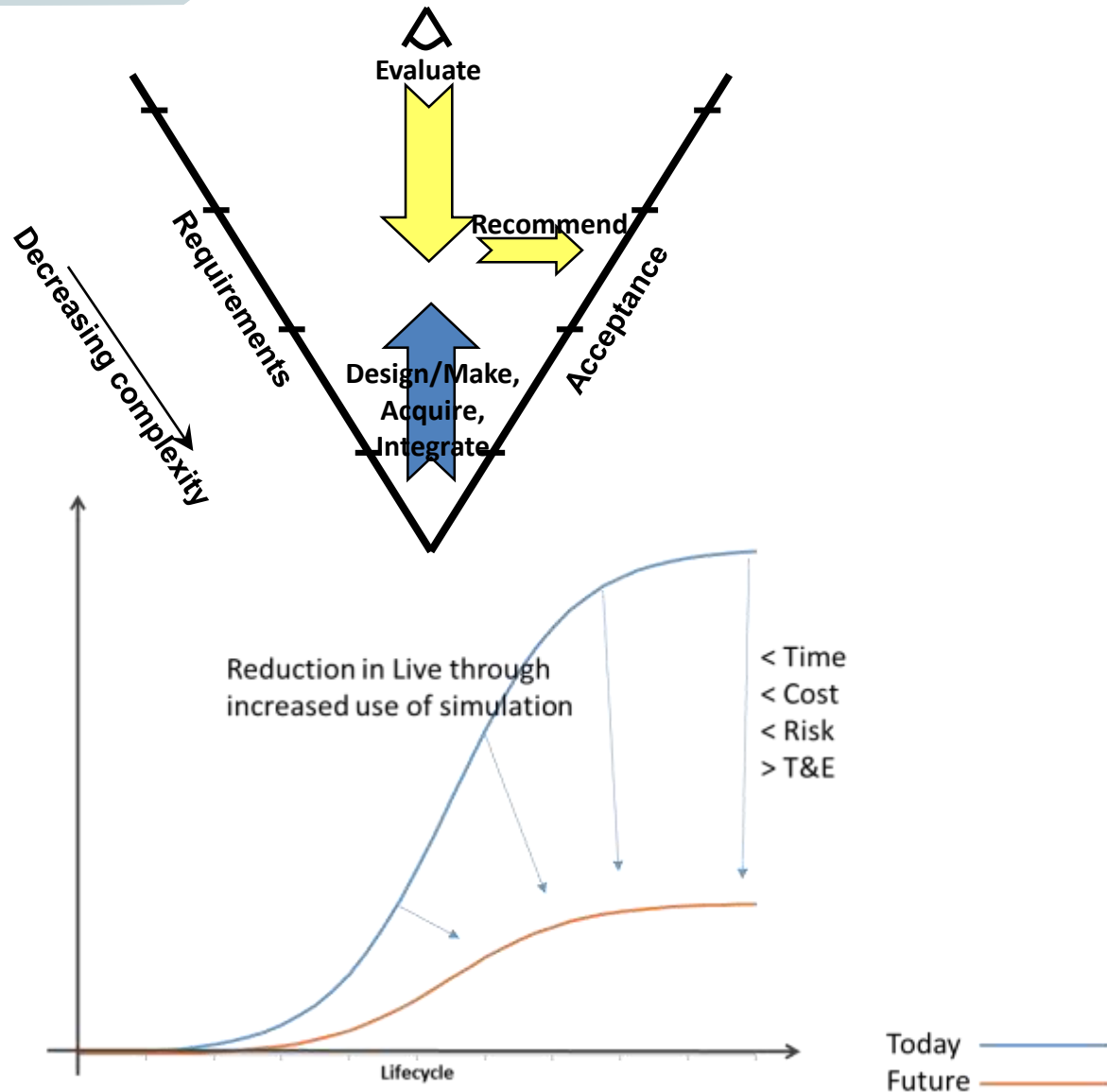
T&E Conditions for Success



Challenge will be to make the change stick!



Modelling and Simulation



- UK approach to M&S is bespoke, reliant on stand-alone solutions with limited application and interoperability.
- M&S should be conducted as early as practicable during requirement setting.



Questions?

