



ITEA BRIEF DIRECTOR, CAPABILITY PACKAGE COL T. HARRIS

28 JAN 2016

DESIGN / DEVELOP / DELIVER / DOMINATE SOLDIERS AS THE DECISIVE EDGE

UNCLASSIFIED

Agenda



- SOSEI Organization
- NIE/AWA Teammates
- NIE/AWA Value-Added for Army Acquisition
- NIEs/AWAs: Enablers for F2025 Maneuvers
- CPDs Role during NIEs/AWAs
- Capability Set Design/Production/Fielding

USE OR DISCLOSURE OF DATA CONTAINED ON THIS PAGE IS SUBJECT TO RESTRICTIONS ON TITLE PAGE.





System of Systems Engineering & Integration





**SoSE&I
Executive Director
Mr Douglas Wiltie**

**Associate Director
Operations
Mr. Ben Intoy**

**Associate Director
Business Team
Ms Julie Reeside**

**Associate Director
Governance &
Synchronization**

**Associate Director
Org Management
Ms Jacque Prange**



**Director E&I COL
Nickee Abbott**

**Director COE
Ms Kelly Alexander**

**Director
Cyber/CIO
COL Stevens**



**Director Capability
Package
COL Terrece Harris**

Mission Statement

Provide coordinated system of systems analysis, engineering, architectural and integration products to facilitate how the Army efficiently shapes, manages, validates and synchronizes the fielding of integrated materiel capabilities

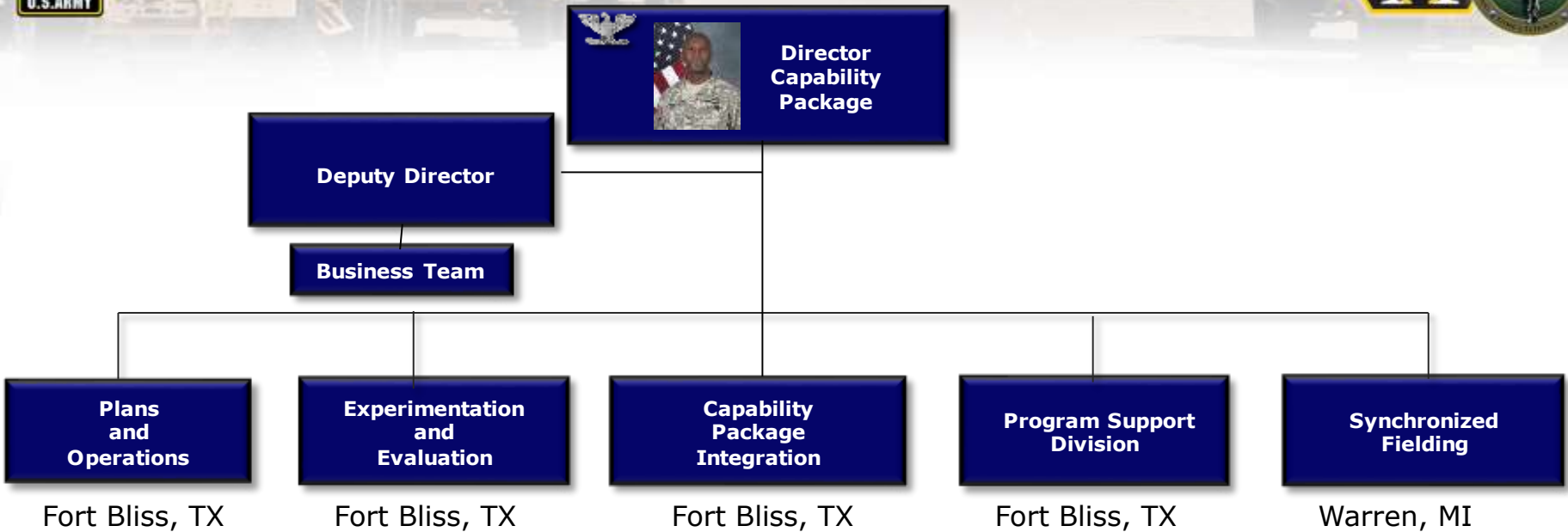
Vision

To be the focal point for System of Systems Engineering and Integration across the Army's materiel development community

USE OR DISCLOSURE OF DATA CONTAINED ON THIS PAGE IS SUBJECT TO RESTRICTIONS ON TITLE PAGE.



Overview – Capability Package Directorate



Mission:

Provide design, engineering, systems integration, and program management functions and expertise required to:

- Inform Army requirements development processes with commercial technologies and prototype systems (AWAs)
- Support integrated evaluations of networked systems and systems of systems in relevant environments (NIEs)
- Expedite fielding of approved concepts to Army Brigade Combat Teams (Synchronized Fielding)

Key Tasks/Scope:

- Fort Bliss (Capability Package Integration)
 - ASA (ALT) lead – coordinates participation of all Army acquisition enterprise agencies
 - Manages contractor engineering services required to support NIEs and AWAs (on-site integration & prototype builds)
- Warren (Synchronized Fielding)
 - Coordinate, integrate, and synchronize the design, production, and fielding of the Army's Capability Sets to BCTs

USE OR DISCLOSURE OF DATA CONTAINED ON THIS PAGE IS SUBJECT TO RESTRICTIONS ON TITLE PAGE.





Army Acquisition Teammates (NIE/AWA 16.1)

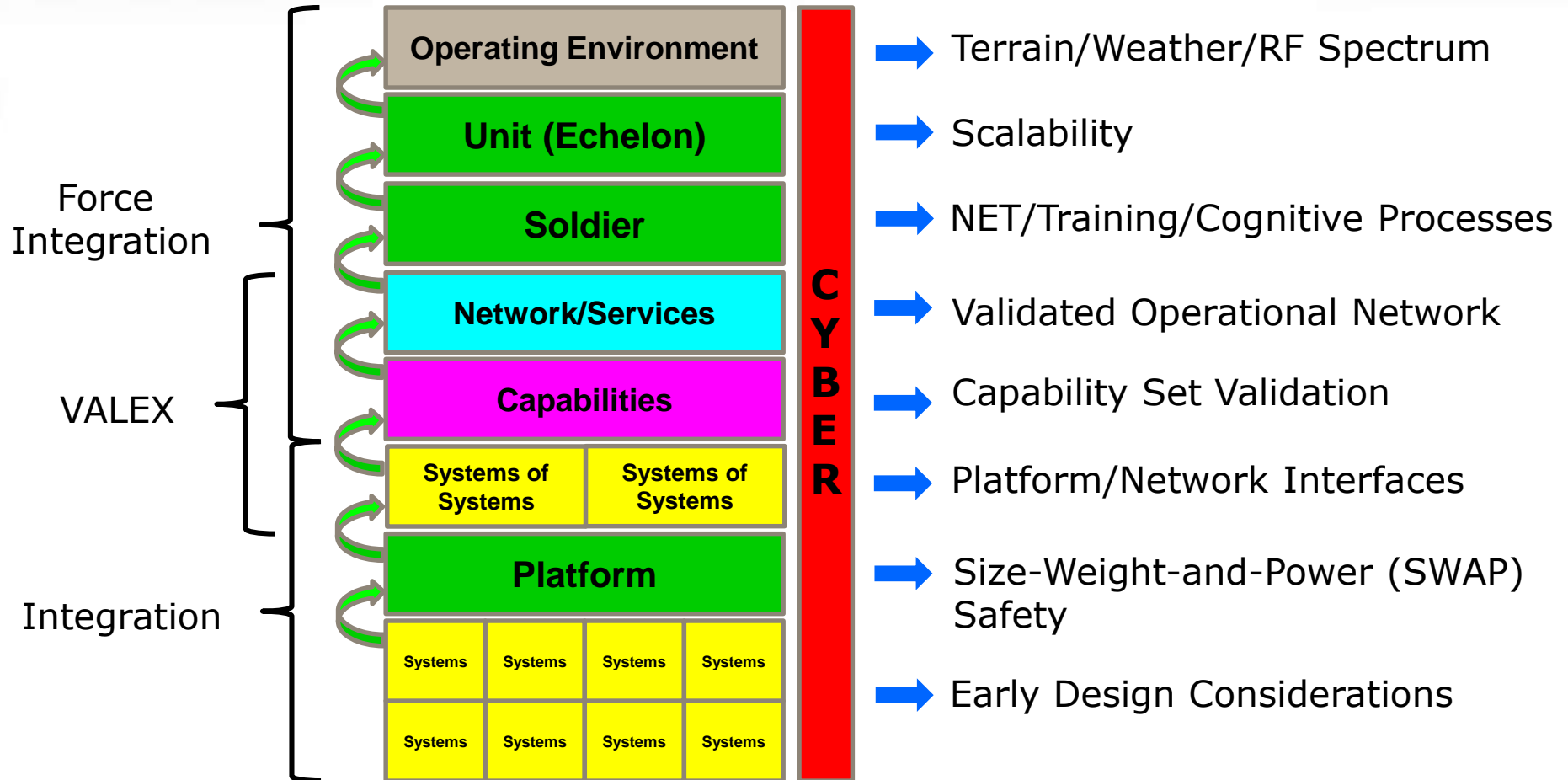


USE OR DISCLOSURE OF DATA CONTAINED ON THIS PAGE IS SUBJECT TO RESTRICTIONS ON TITLE PAGE.



DESIGN / DEVELOP / DELIVER / DOMINATE
SOLDIERS AS THE DECISIVE EDGE

NIE/AWA Value-Added for Army Acquisition



Providing Operational Relevance for Systems of Systems Test and Assessment

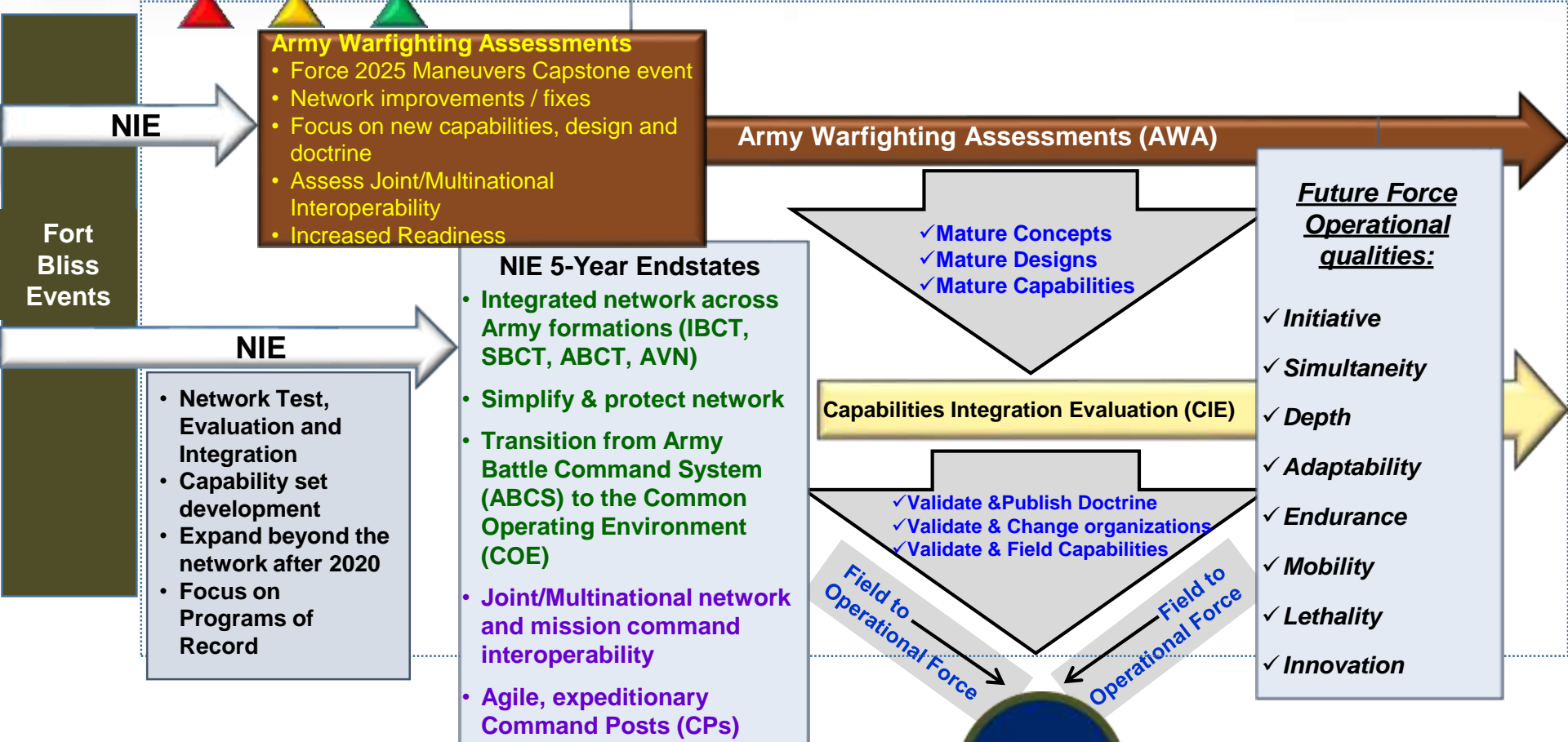
USE OR DISCLOSURE OF DATA CONTAINED ON THIS PAGE IS SUBJECT TO RESTRICTIONS ON TITLE PAGE.



NIEs/AWAs: Enablers for F2025 Maneuvers



2014 2015 2016 2017 2018 2019 2020 2021 2022 2023 2024 2025



NIEs and AWAs: complementary capstone exercises – enduring priorities and critical components of Force 2025 Maneuvers!



- NIE 14.2: AWA initial Proof of Concept exercise
- NIE 16.1: AWA final Proof of Concept exercise
- AWA 17: First AWA

USE OR DISCLOSURE OF DATA CONTAINED ON THIS PAGE IS SUBJECT TO RESTRICTIONS ON TITLE PAGE.





CPD's Role during NIE/AWA



WE ARE HERE
↓

AWA16.1

NIE 16.2

AWA 17

NIE 17.2

PLANNING / Preparation

- Horse Blanket Coordination
- Configuration Management (AORB/CMB)
- Golden Vehicle (Prototype) Identification
- Tactical Platform Recovery Operations (to IMP)
- Equipment Deliveries to IMP
- Tactical Platform Inventories
- Data Product User's Guide (DPUG) Planning
- Instrumentation Planning
- Safety Release Vehicle Test Planning
- NET Planning (Vehicles needed for NET)
- SUT/SUE/Carryover Requests For Information
- SUT/SUE/Carryover Deliveries
- Platform PM/OEM Coordination
- FSR Coordination
- Product Integration
- Trouble Ticket Planning
- Cable/Metal Fabrication Planning
- IMP Preparations
- Long Lead Item Procurements
- Warehouse Inventory

INTEGRATION / Installation

- Golden Vehicle Engineering Design
- Engineering Reviews (SID/OEMs/TARDEC)
- Tech Data Packages
- Golden Vehicle Build and Eng Design Verification
- Safety Release Vehicle Build and Preparation
- OEM Safety Assessment Reports
- Safety Release Test Technical Support
- NET Vehicle preparation and delivery
- Fleet Vehicle Build
- Problem Reporting and Resolution
- DPUG (IP Cut Sheet)
- Deploy Trail Boss Teams to IMP
- VALEX Coordination and Prep
- System/SoS QA/QC
- Trail Boss Teams
- VALEX Execution (Thread Runs)
- FSR Coordination
- Technical Review Boards (TEWGs)
- AORB/CMB

FIELD SUPPORT / Test Execution

- Deploy Main Body to Ranges
- Deploy Logistics Support Team
- Field Tech Support (HICON/RSTs/USTs)
- FSR/AFSB Management
- Trouble Ticket Management
- Support Record Test
- Support Excursions
- Initiate Technical Reports
- Initiate Trend Analysis
- Recovery/Demod Planning

RECOVERY / DEMOD

- De-Install SUT/SUE Equipment
- De-Install Instrumentation
- Return Vehicles to 10-20 standards
- Posture Platforms for Follow-on NIE
- Account for Internal Equipment
- Out Process and Clear Bliss/WSMR Ranges
- After Action Reviews
- Finalize/Submit VI Technical Reports
- Perform Trend Analysis/Publish Report



Capability Set Design, Production, and Fielding

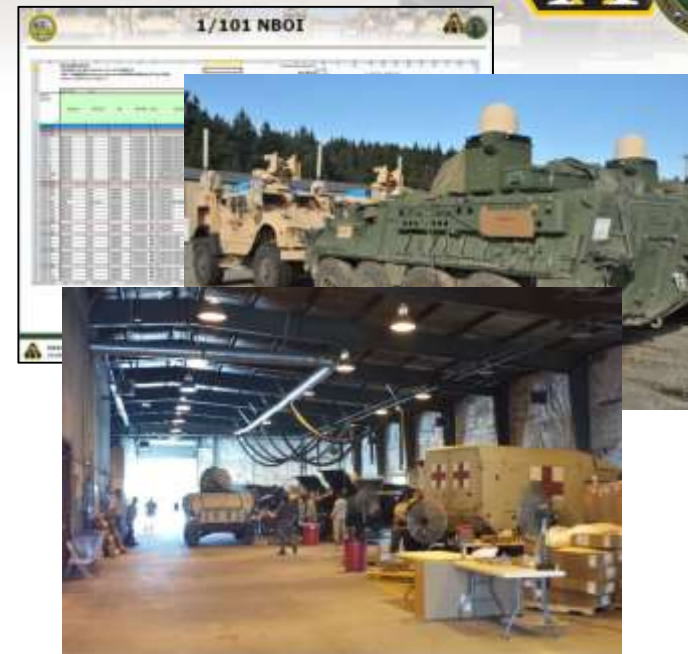


Capability Set - an integrated set of multiple Programs of Record from across PEOs, fielded together as a system of systems, to achieve enhanced network operational performance.

- Based on NIE Architectures and Test Results
- Accomplished via an Integrated Unit Set Fielding Approach
- Integrates Architecture Development, Platform Integration, and New Equipment Fielding/Training across PEOs.
- Provides System of Systems certification and integrated Logistics/Sustainment products to the Unit.

Results:

- Fielded Capability Sets to 9 IBCTs, 3 SBCTs, and 6 Div HQs.
 - Includes fielding Lower Tactical Internet capability to 2 IBCTs (700+ vehicles in a BCT).
- Proven use in Theater – effective mission command on the move, over extended ranges, in complex terrain
- Initiated Architecture development for future ABCT CS Fieldings
- Coordinating Army Implementation of VICTORY architecture-enabled open system architecture vehicles



AMERICA'S ARMY: THE STRENGTH OF THE NATION

Theater Feedback on CS13

North Of Kabul

Terrain Relief

Key Takeaways:

- ✓ CS 13 provides effective mission command on the move capabilities supporting remote combat operations
- ✓ CS 13 enabled increased Command and Control Communications over extended ranges and allowed passage of information and reports between commanders and units both At The Halt and On The Move

USFOR-A has requested all CS 13 equipment remain in theater and be augmented with additional POPs when 10th MTN BCTs depart

“Capability Set 13 and the POPs are game changers. The network capability supports our reduced FML (Fixed Manning Level) while providing increased capability on the move and down to the Platoon.” COL Mario Diaz, Commander, TF Patriot

“The enhanced situational awareness given to us by this technology has allowed us to maintain a ‘digital guardian angel’.... The various platforms of CS 13 give us a digital reach like we’ve never had before.” - Maj. Gary Pickens, Brigade S6 for the 4th BCT, 10th Mountain Division

CS 13:

- ✓ Provides access to CX-I portal, email, phone, TIGR, and chat services on the move in restrictive terrain
- ✓ Enables intelligence and information gathering capabilities such as full motion video and access to TF Patriot portal
- ✓ Enhanced information flow and enabled reporting from a highly mobile mission command platform
- ✓ Supports remote SFATT operations at “Warm Bases” with a small comms footprint on the platform vs. deploying a larger communications capability

USE OR DISCLOSURE OF DATA CONTAINED ON THIS PAGE IS SUBJECT TO RESTRICTIONS ON TITLE PAGE.



Questions?



UNCLASSIFIED

USE OR DISCLOSURE OF DATA CONTAINED ON THIS PAGE IS SUBJECT TO RESTRICTIONS ON TITLE PAGE.



DESIGN / DEVELOP / DELIVER / DOMINATE
SOLDIERS AS THE DECISIVE EDGE