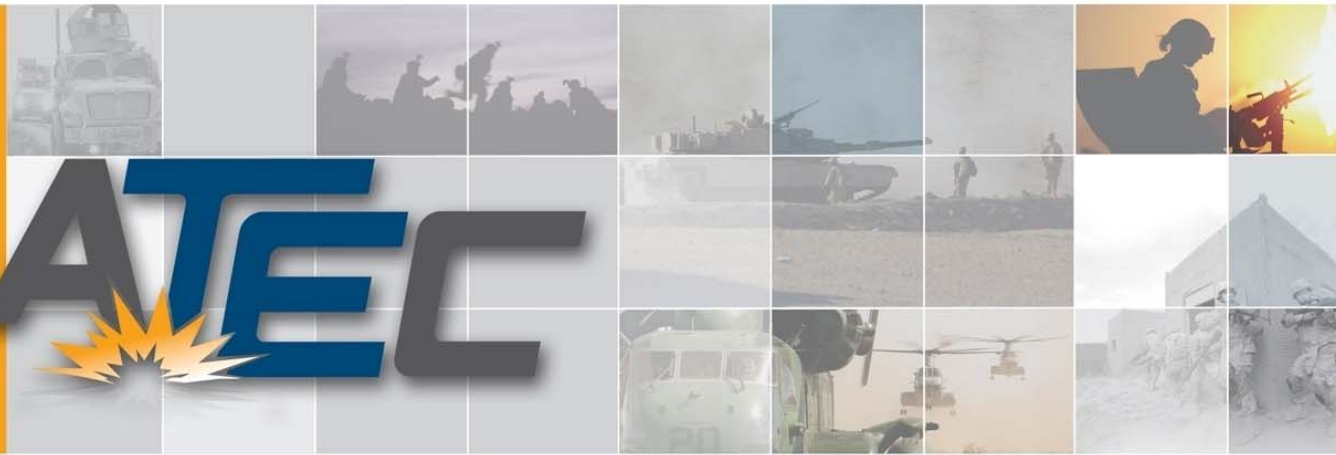




Army Test and Evaluation Command

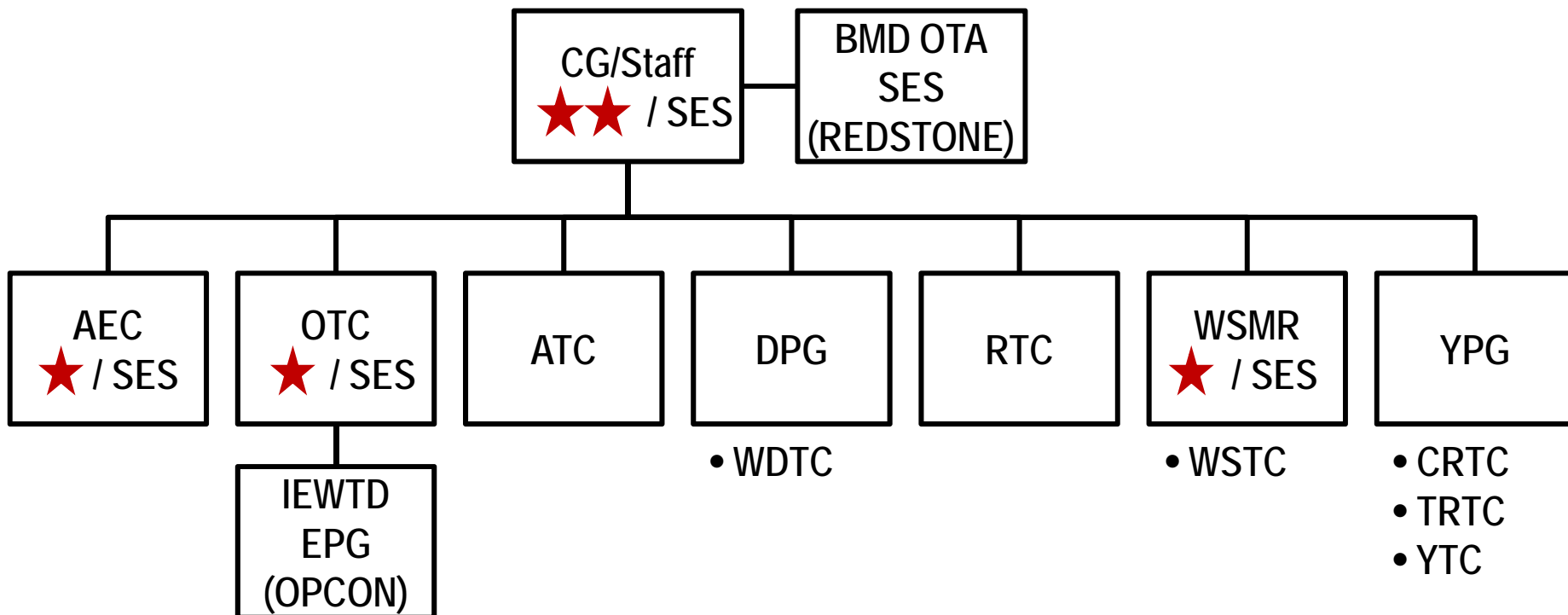


20 Jul 11 Rapid Acquisition Panel 2011 ITEA Technology Review

Mike Zwiebel
Director, ATEC G-9 / Test Management



ATEC Reorganization



ATEC: Army Test Evaluation Command
 DTC: Developmental Test Command
 OTC: Operational Test Command
 AEC: Army Evaluation Center
 BMD: Ballistic Missile Defense
 OTA: Operational Test Agency

WDTC: West Desert Test Center
 WSTC: White Sands Test Center
 CRTC: Cold Regions Test Center
 TRTC: Tropical Regions Test Center
 YTC: Yuma Test Center
 IEWTD: Intelligence Electronic Warfare Test Directorate

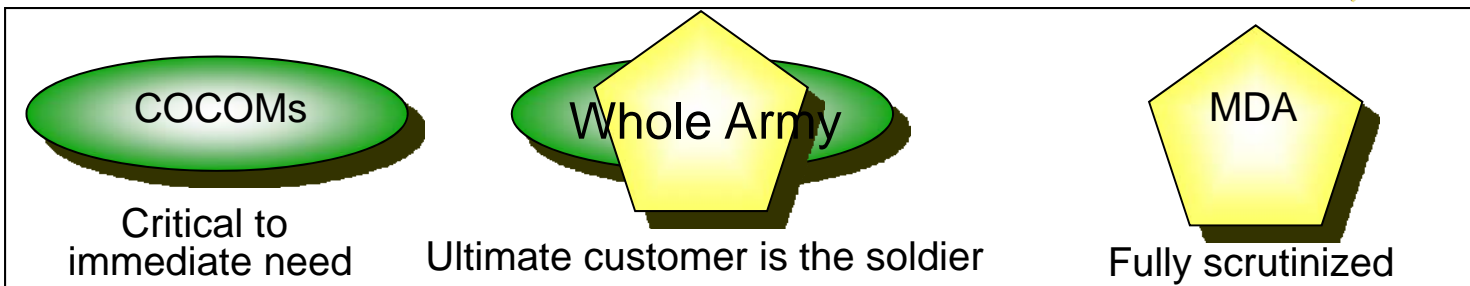
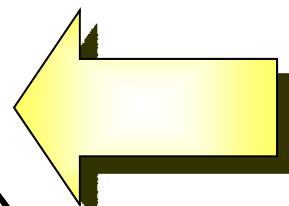
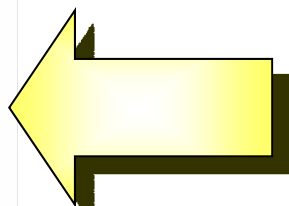
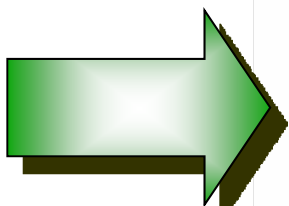
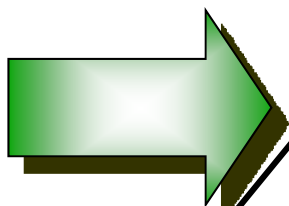
ATC: Aberdeen Test Center
 DPG: Dugway Proving Ground
 EPG: Electronic Proving Ground
 RTC: Redstone Test Center
 WSMR: White Sands Missile Range
 YPG: Yuma Proving Ground

Rapid Equipping

- Quick, overlapping
- Higher Risk
- Opportunistic/ Ad hoc
- Less bureaucratic & little oversight
- Proponent & Community of the Willing
- Incomplete Data
 - Constrained DT
 - Limited OT
 - C&L Report to User
- Cheap to Community – Expensive to ATEC

Title X, DoD 5000, etc.

- Deliberate
- Risks Mitigated
- Fully Synchronized
- Bureaucratic & oversight
- Full Community involvement
- All data
 - Robust DT
 - Full OT
 - OMAR/OER to MDA
- Expensive to Community

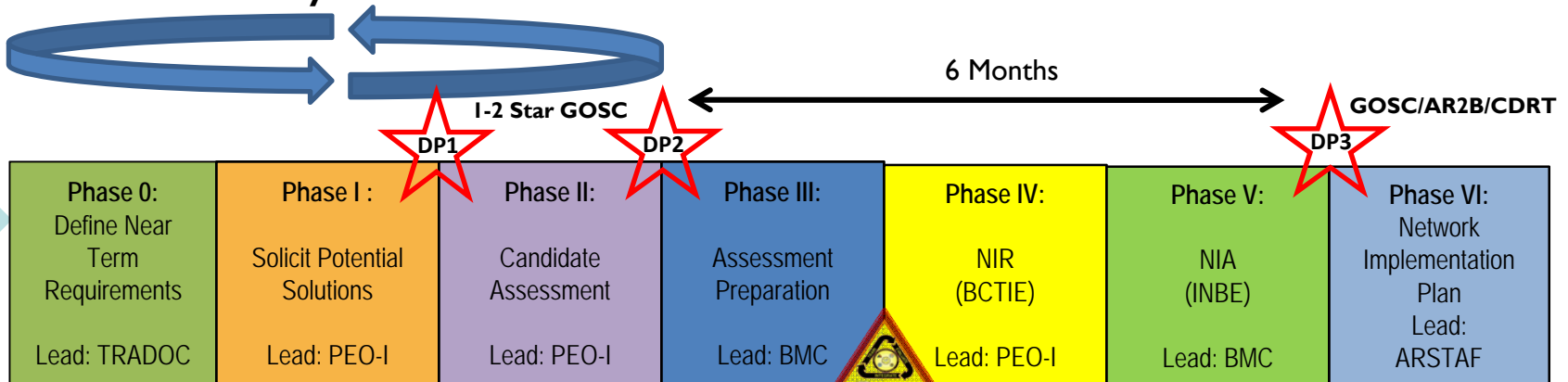


Army Agile Process – Briefly

To shape the Development, Integration, Test and Certification of the Network for Success:

- Common understanding of desired capabilities and limitations
 - Enables ability to know how to test; creates early dialogue between stakeholders
- Common set of “core” vignettes based on “in-the-dirt” testing
 - Facilitates Model-Test-Model approach, and understanding of “baseline” conditions under which system must perform
- Common set of “core” measures
 - Allows for reuse of data, promotes similarities in findings and results, and improvements to processes
- Data Model
 - Ensures reuse of data, clear understanding of measures and data elements to be collected, and analytic consistency between test events and capability sets

Continuous Cycle in Phases 0-II

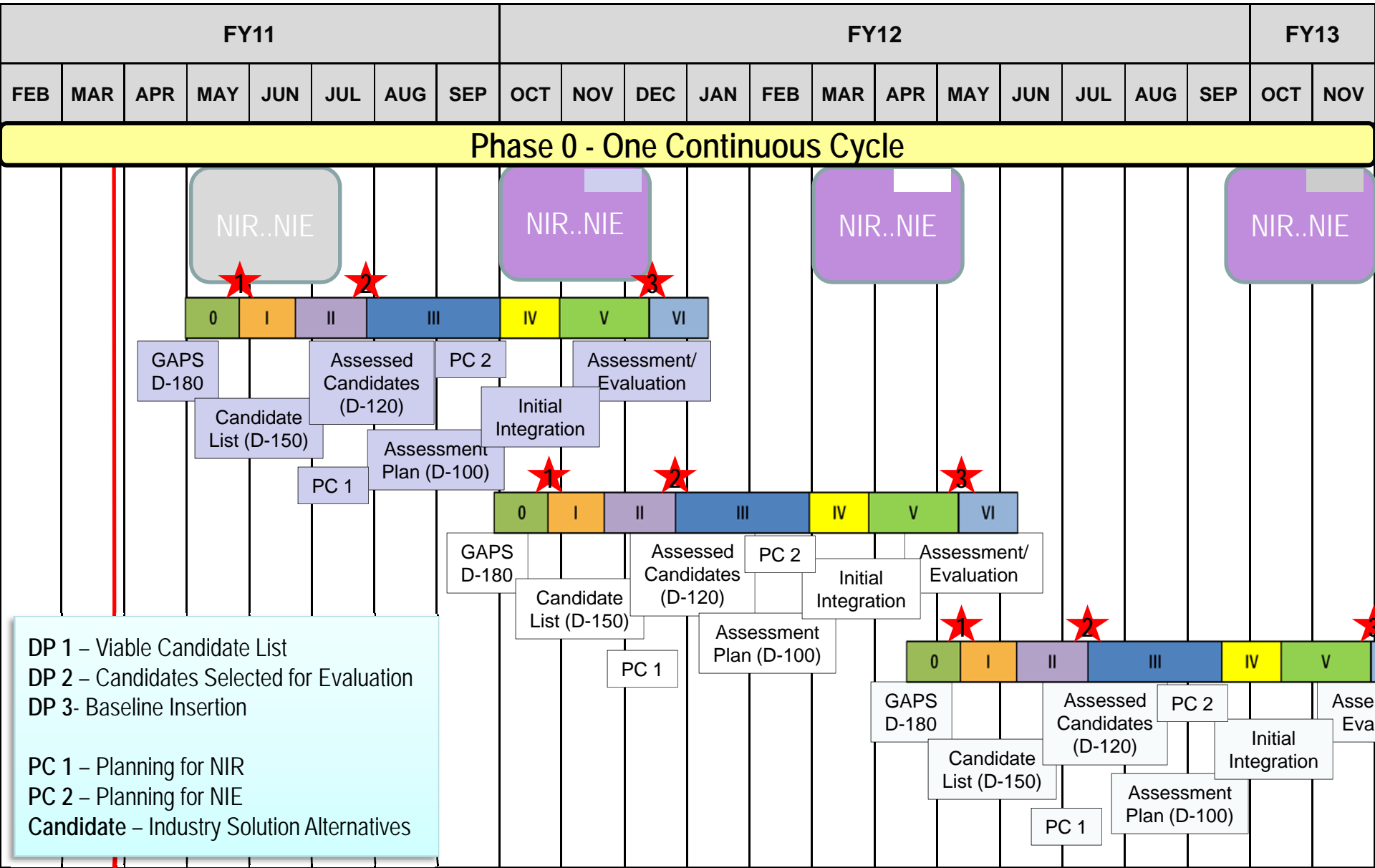


- DP 1** - Viable Candidate List
- DP 2** - Candidates Selected for Evaluation
- DP 3** - Baseline Insertion

Triad: ATEC, BMC, and PEO Integration



Shorter, Intense Planning and Rehearsal Cycles



Path Ahead

- VCSA has directed the Army Agile Process be used on all Programs of Record, not just those related to the Network
- Internally ATEC informally staffing draft Army Agile Process Policy

Emerging FY 11 NIE Lessons Learned

- Need to look at Instrumenting "select" Systems Under Evaluation (SUEs)
- Electronic Warfare needs to be a "two way street"; Need to look at Blue on Threat as well as Threat on Blue
- Need to relook our Threat Accreditation Process to accommodate reduced NIE Timelines; For Operational Tests an Accredited Threat required by AR 73-1 *"Test and Evaluation Policy"*