



Australian Government
Department of Defence
Capability Development Group



Australia's Revised Early T&E Planning

New Risk-focused Preview T&E

Group Captain (Dr) Keith Joiner
PhD, MMgmt, MSc, BEng, CPPD, CPEng, asq(e), psc(j)

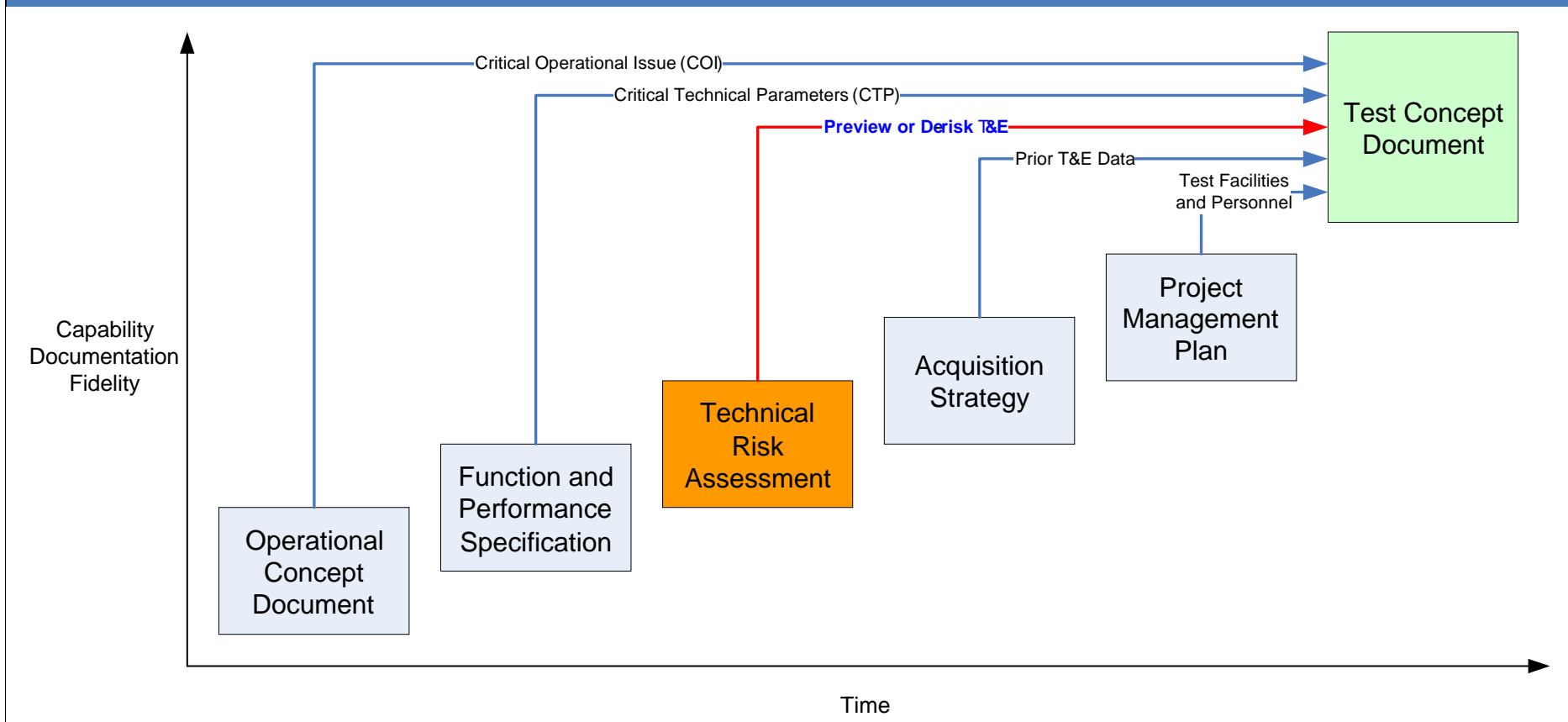
Director General T&E
Australian Defence T&E Office (ADTEO)





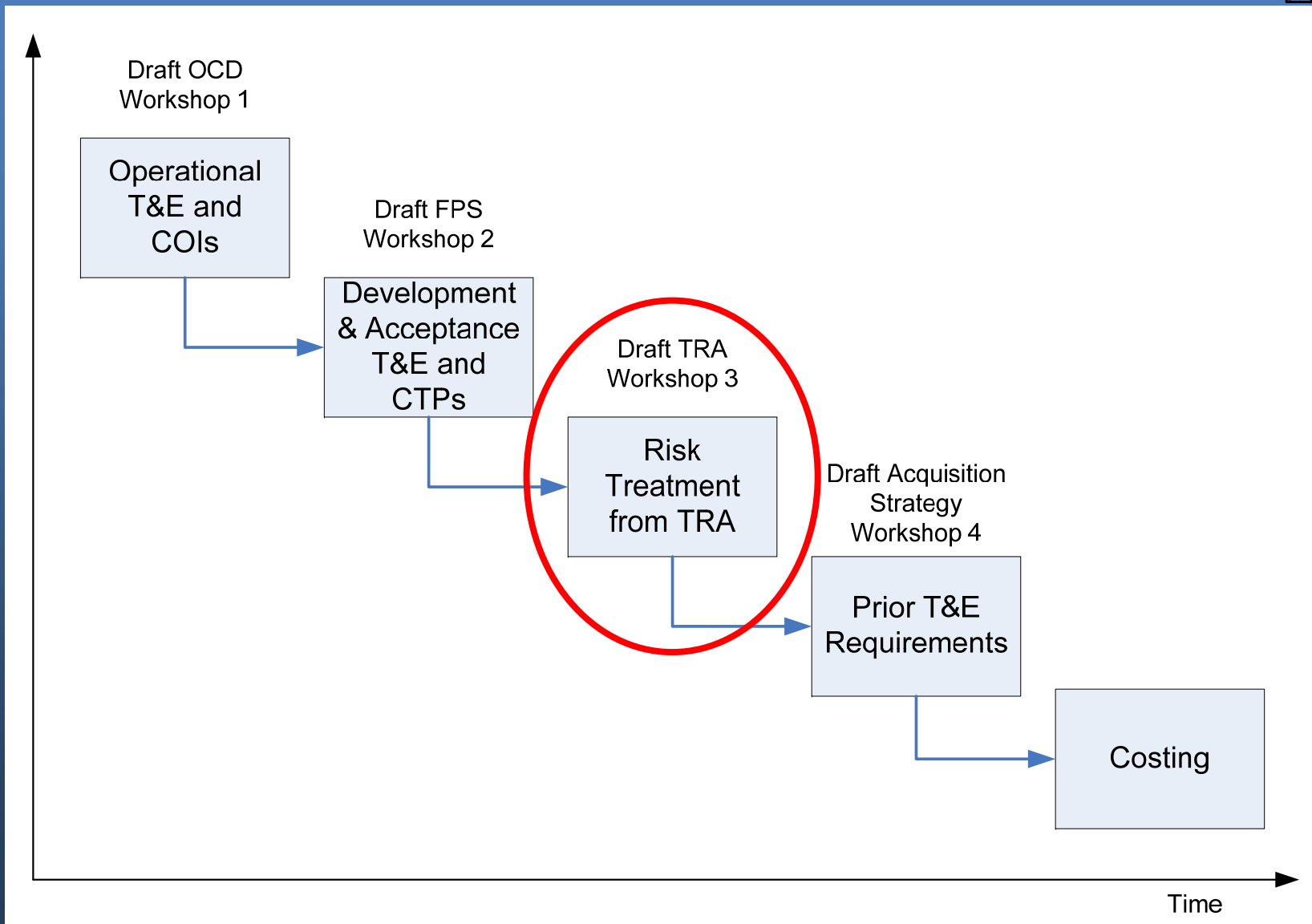
- Test Concept Development
- Risk Reduction – TRA Workshop Criteria
- The first risk reduction workshop
 - our Project LAND 400
 - land combat vehicle system
- The first outcome
 - LAND 400 Preview T&E Activities for solicitation phase





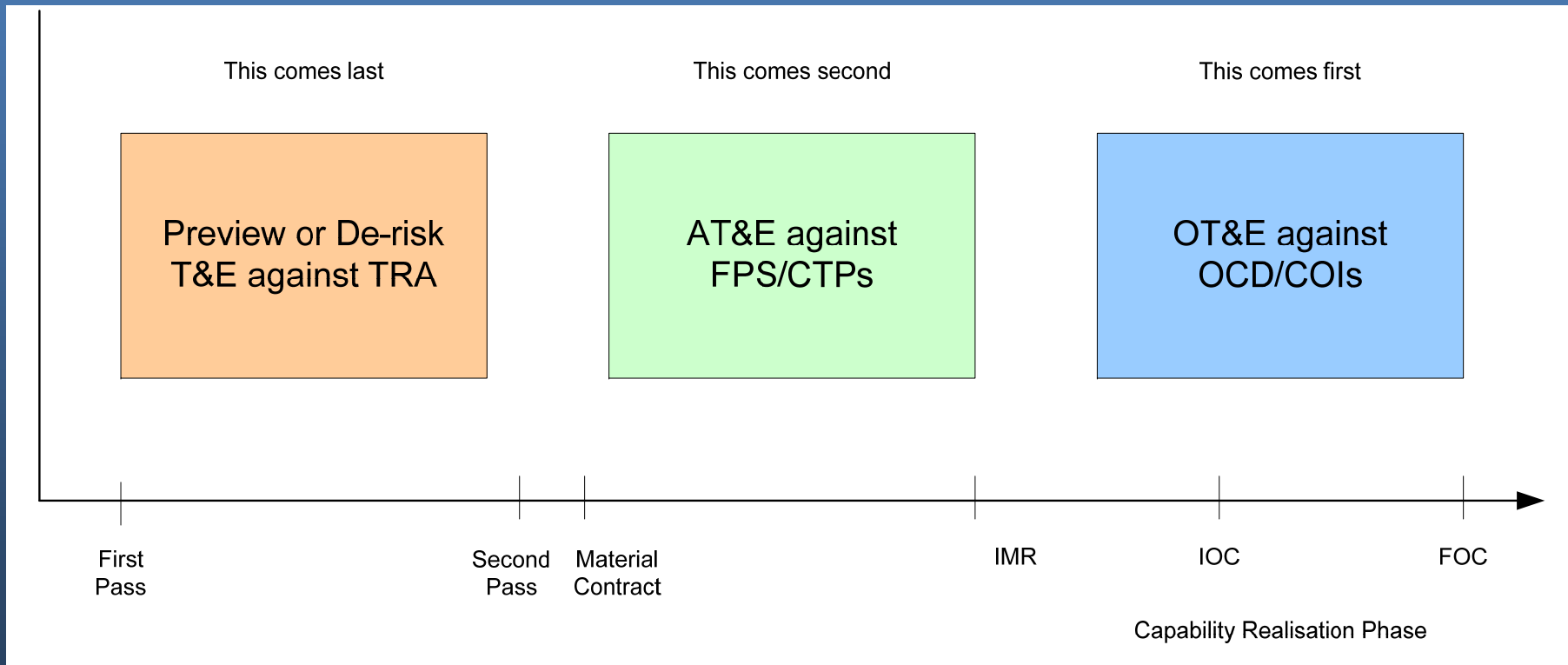


Most Efficient TCD Development for a Conventional Acquisition





Projecting Test Concept Development onto the Chronology of Capability Realisation





Australian Government
Department of Defence
Capability Development Group

Risk Treatment Workshop



Entry Criteria: - draft technical risks, plus operational risks from workshop 1

Attending: Defence Science staff assessing tech risks & all affected T&E agencies

Issues: Review each risk assessed medium or high & confirm with T&E experiences

For each high risk or medium & linked to a COI or CTP, the RTW is to consider what preview or de-risk T&E could be undertaken as part of the solicitation phase to treat

Must avoid simply starting DT&E or AT&E checklists normally used after Contract as these will not be targeted

All preview T&E proposed by the RTW to be:

- overseen by a T&E agency,

- funded from First Pass,

- be integral to the solicitation process for probity & access, &

- include at least a simplified FCA/PCA process so results traced

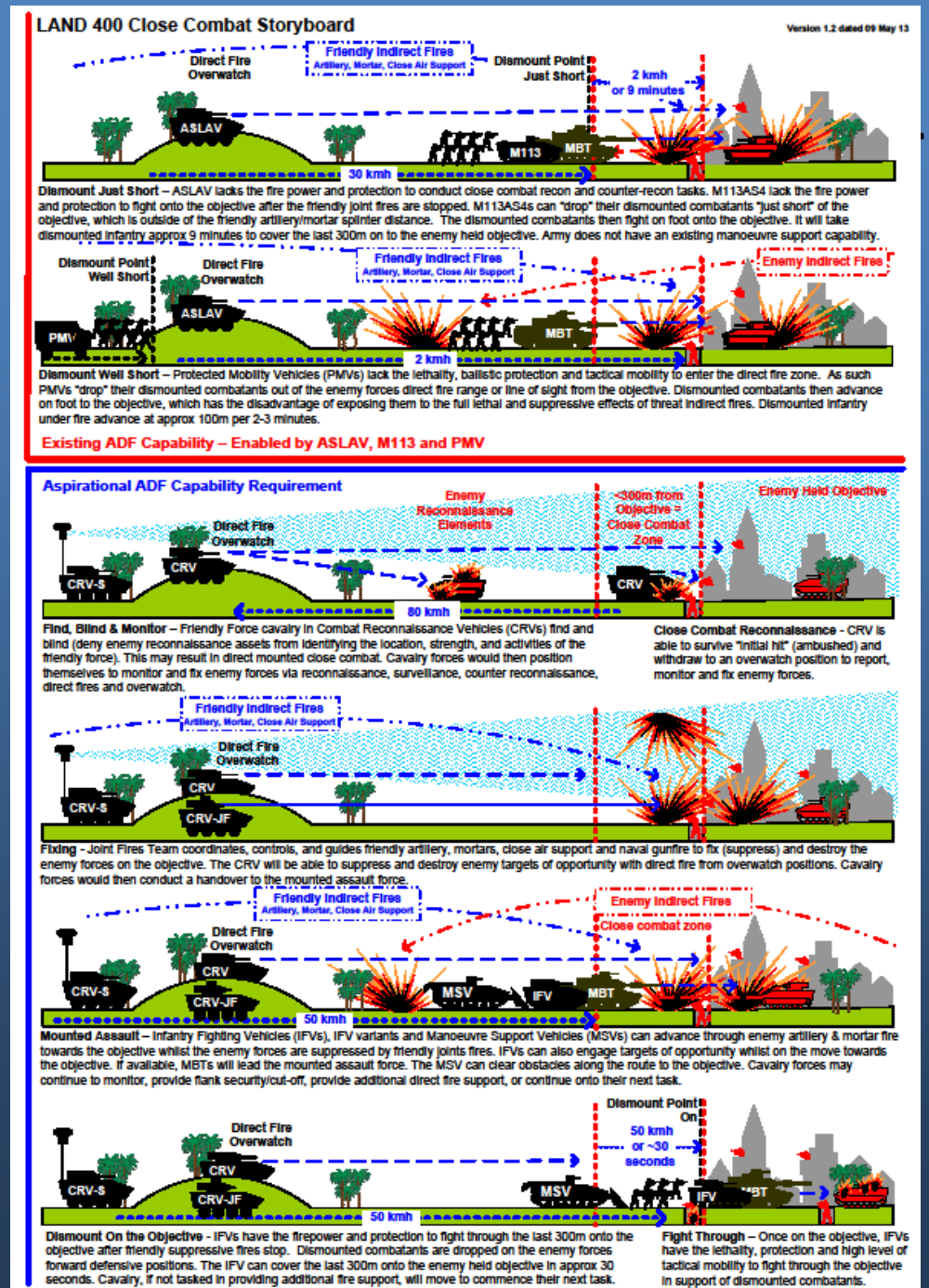
Decide if necessary to do in Aust & if operate by military or just have demonstrated

Outcome: 1st-2nd Pass Preview T&E plan



Land Combat Vehicle System Risk Treatment Workshop Nov 2012

- **Stakeholders:** Project Office, Defence Science, T&E Agencies
- **Process:**
 - All TRA HIGH risks were ‘war-gamed’ with T&E Agencies
 - Practical De-Risking activities were identified as achievable and justifiable in an ODA
- **De-Risking Options:**
 - Prototype Testing
 - Demonstration
 - Analysis





LAND 400 Preview T&E



- **Vehicle Performance Assessment:**

- Vehicle Mobility
- Electromagnetic Interference/Electromagnetic Compatibility
- Environmental
- Reliability, Availability & Maintainability



- **Lethality Assessment:**

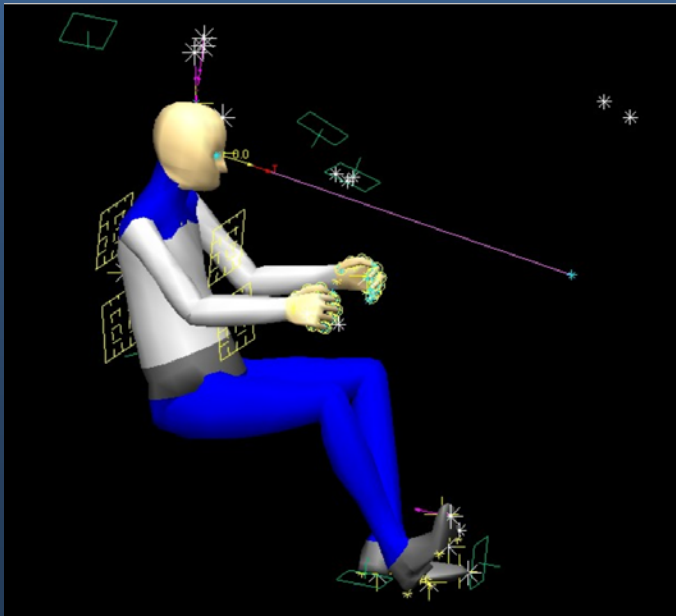
- Fire Control System
- Weapon Accuracy
- Weapon Effects
- Weapon Performance Capabilities
- Human Machine Interface



LAND 400 Preview T&E



- **Survivability Assessment:**
 - Passive Protection
 - Active Protection
 - Detectability/Signature Management
 - Chemical, Biological, Radiation, Nuclear Protection



- **User Evaluation:**
 - Mobility Characteristics
 - Integrated Logistic Support
 - Human Factors
 - Tactical Capabilities
 - Storage
 - Training



Integration & Interoperability Assessments

- ensure each tendered LCVS solution assessed for its integration capacity with current and developing GFE
- For example, integrate the Battle Group and Below Command, Control and Communication (BGC3) system to vehicle combat management system

BGC3 → Vehicle CMS

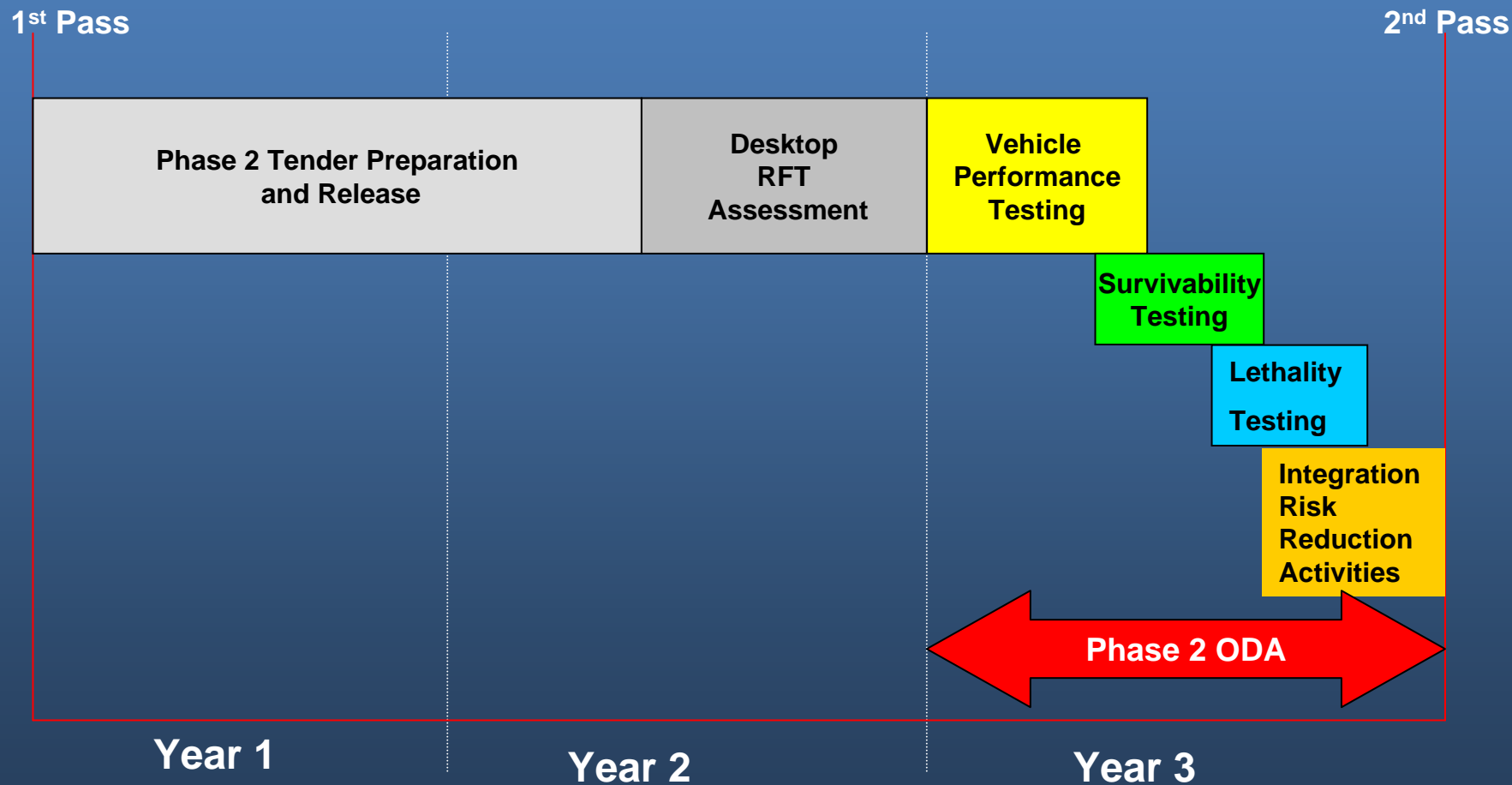
then prove interoperability with:

- dismounted forces &
- other CAFS Force Elements (ie. ARH, MRH, LTH)
- T&E offices work closely with:
 - Tactical Information Exchange Integration Office (TIEIO) &
 - Land Force Network Implementation & Training Advisory Team (NITAT)





LAND 400 Schedule Between 1st -2nd Pass





Australian Government
Department of Defence
Capability Development Group



Questions

- New Early T&E Process
 - Defence Capability Development Manual Part 2 Chapter 8 (draft)
 - Request through david.hockley@defence.gov.au
- LAND 400
 - <http://www.defence.gov.au/dmo/lcd/land400/>