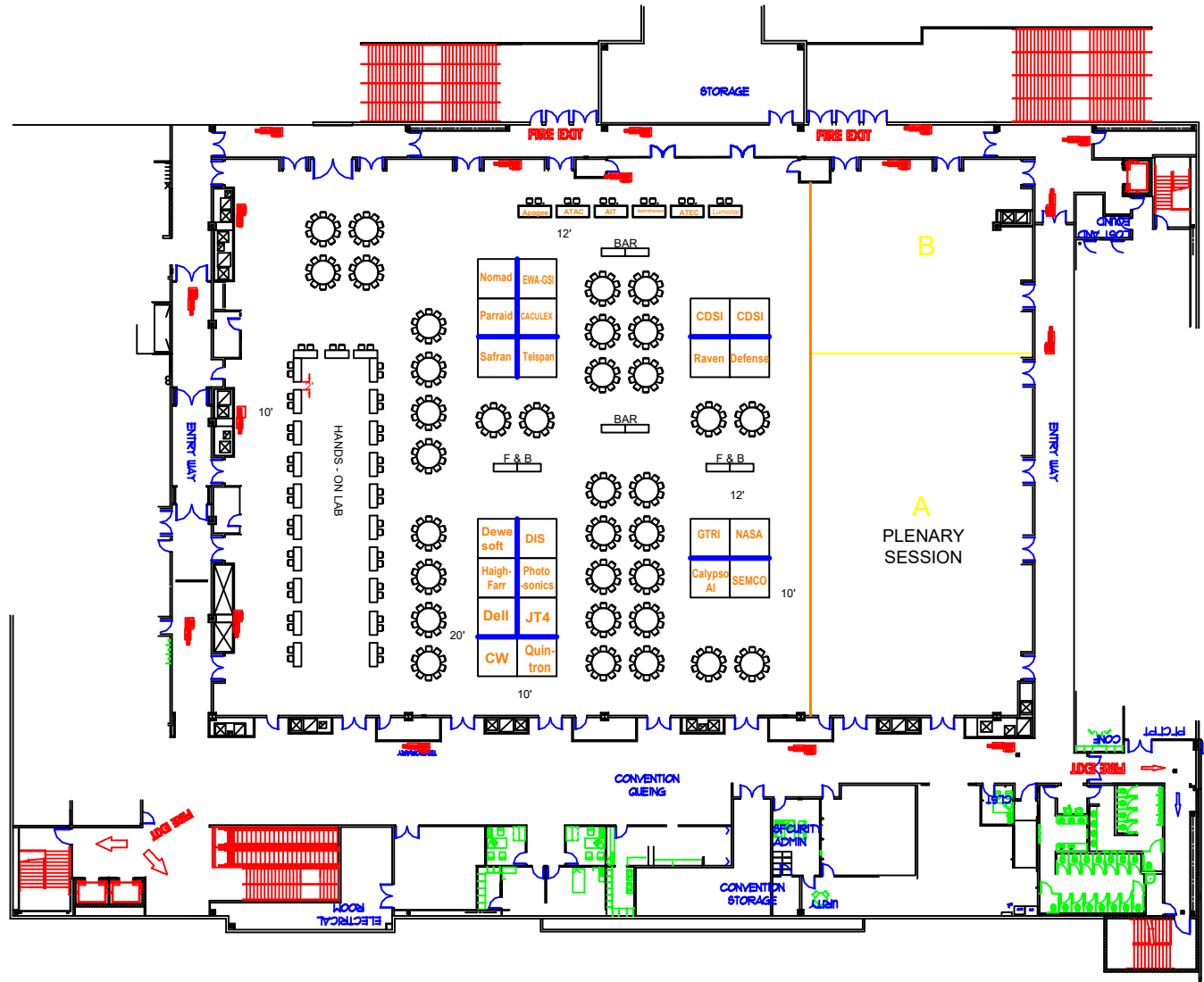


ITEA TIW 2023
MAY 23-25, 2023
TUSCANY SUITES & CASINO
FLORENTINE C-G
LAS VEGAS, NV



2575 NORTHWEST PKWY
ELGIN, IL 60124
P: 847.426.3100
F: 847.426.3111
www.vipertradeshow.com

DATE
3.24.23

BOOTH COUNTS
ALL BOOTHS ARE 10' X10'
UNLESS NOTED

10 x 10 = 28
6' TABLES = 6

BACKWALL

KEY
FE-FIRE EQUIPMENT
ALL EXITS 6' UNLESS NOTED
ALL DRAPE USED MEETS
FLAME RETARDANT FIRE CODE

SHOW INFO
SHOW OPENS:
SHOW CLOSSES:
MOVE IN:
MOVE OUT:
CONTACT:
PHONE:

CAPACITY INFO
GUESTS: N/A
TOTAL SQ FT: 14700
USABLE SQ FT: 14700
MAX OCCUPANCY: 980
MAX ALLOWED OCCUPANCY: 980
EXIT FEET REQ: 16'
FIRE EXITS GIVEN: 48'
FIRE EXTINGUISHERS REQ: 4
FIRE EXTINGUISHERS GIVEN: N/A

DRAWN BY
M. MOSES

SCALE
1" = x UNITS

DISCLAIMER
Every effort has been made to ensure the accuracy of all information contained on this floor plan. However, no warranty, either expressed or implied, is made with respect to the accuracy of the information. The user assumes all responsibility for the use of this information. The user agrees to hold the designer harmless for any and all claims, damages, or losses, in whole or in part, resulting from the use of this information. The user agrees to hold the designer harmless for any and all claims, damages, or losses, in whole or in part, resulting from the use of this information.

Doors that are blocked or unavailable and are not needed to meet the minimum exit requirement will have exit signs covered.
There will be no candles, pyro-technics or open flames that have not been properly permitted used in this event.

ROOM
MAX OCCUPANCY 14700 sqft divided by 15 = 980
Linear footage of exits REQUIRED, 980 divided by 60 = 16'
Fire Exits Req: 980 Times .02 = 19'
Fire Exits Given: 48'
Fire Extinguishers Req: 14700 sqft divided by 3000 = 4
Fire Extinguishers Given: N/A