

SEMCO 203, 302, 213.
 EWA 107/206, 113/212, 213/312, 205/304,
 215/203, 103,101

ITEA TIW 2023
 MAY 23-25, 2023
 TUSCANY SUITES & CASINO
 FLORENTINE C & D
 LAS VEGAS, NV



2575 NORTHWEST PKWY
 ELGIN, IL 60124
 P: 847.426.3100
 F: 847.426.3111
 www.vipertradeshow.com

DATE

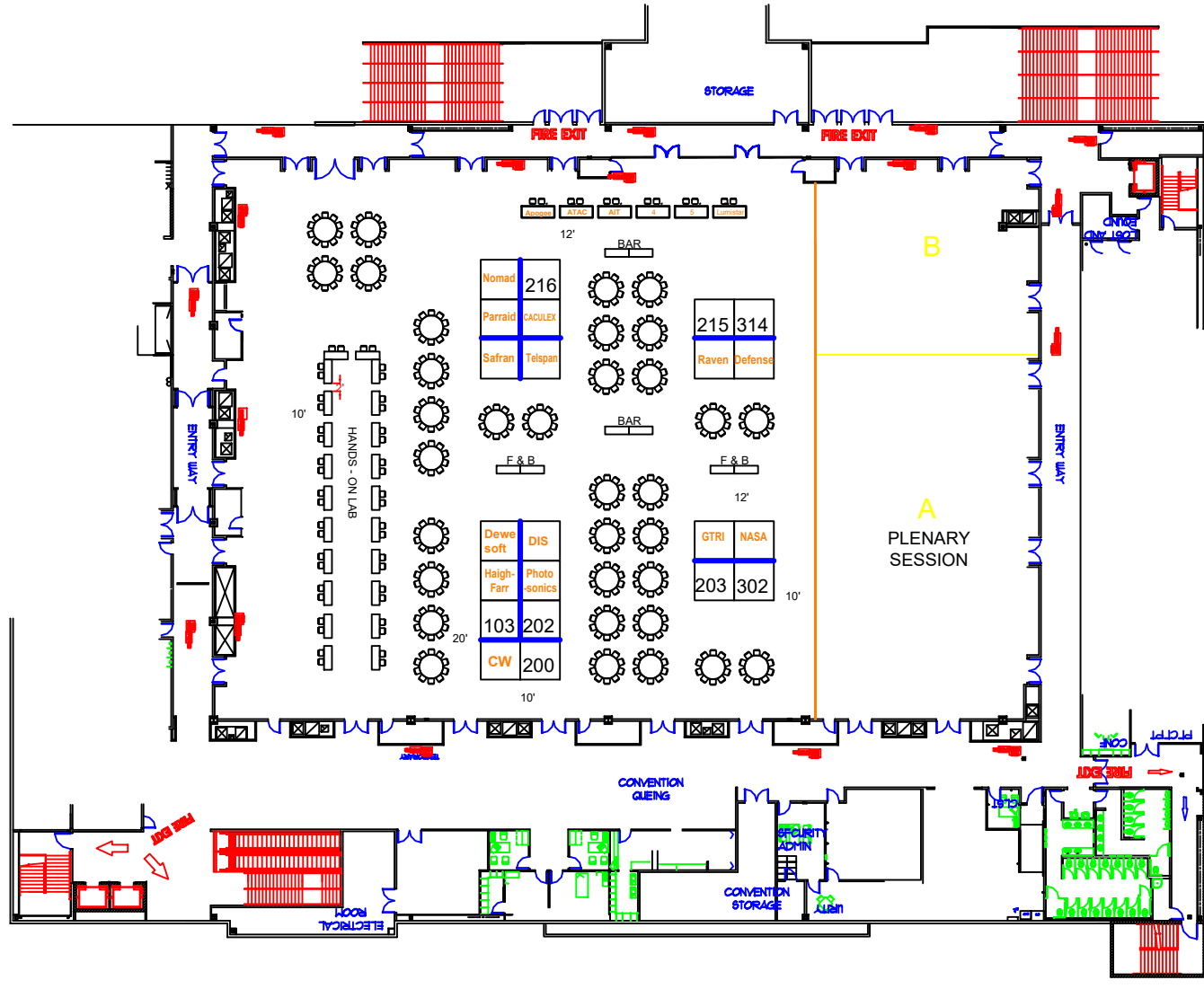
3.24.23

BOOTH COUNTS

ALL BOOTHS ARE 10' X10'
 UNLESS NOTED

10 x 10 = 28
 6' TABLES = 6

BACKWALL



KEY

FE-FIRE EQUIPMENT
 ALL EXITS 6' UNLESS NOTED

ALL DRAPE USED MEETS
 FLAME RETARDANT FIRE CODE

SHOW INFO

SHOW OPENS:
 SHOW CLOSES:
 MOVE IN:
 MOVE OUT:
 CONTACT:
 PHONE:

CAPACITY INFO

GUESTS: N/A
 TOTAL SQ FT: 14700
 USABLE SQ FT: 14700
 MAX OCCUPANCY: 980
 MAX ALLOWED OCCUPANCY: 980
 EXIT FEET REQ'D: 16'
 FIRE EXITS GIVEN: 48'
 FIRE EXTINGUISHERS REQ: 4
 FIRE EXTINGUISHERS GIVEN: N/A

DRAWN BY

M. MOSES

SCALE

1" = X UNITS

DISCLAIMER

Every effort has been made to ensure the accuracy of all information contained on this floor plan. However, no warranty, without limitation or liability, are made with respect to contents, omissions or other substantial components or items of or which is the sole responsibility of the exhibitor to determine the feasibility to verify all dimensions and locations.

Doors that are blocked or unavailable and are not needed to meet the minimum exit requirement will have exit signs covered.

There shall be no outside, pre-technics or open flames that have not been properly permitted used in this event.

ROOM
 MAX OCCUPANCY 14700 sqft divided by 15 = 980
 Linear footage of exits REQUIRED, 980 divided by 60 = 16'
 Fire Exits Req: 980 Times .02 = 19'
 Fire Exits Given: 48'
 Fire Extinguishers Req: 14700 sqft divided by 3000 = 4
 Fire Extinguishers Given: N/A